

# Cutting layouts for 12 Armadillo Masks

A fabric has two selvages and two cut edges.

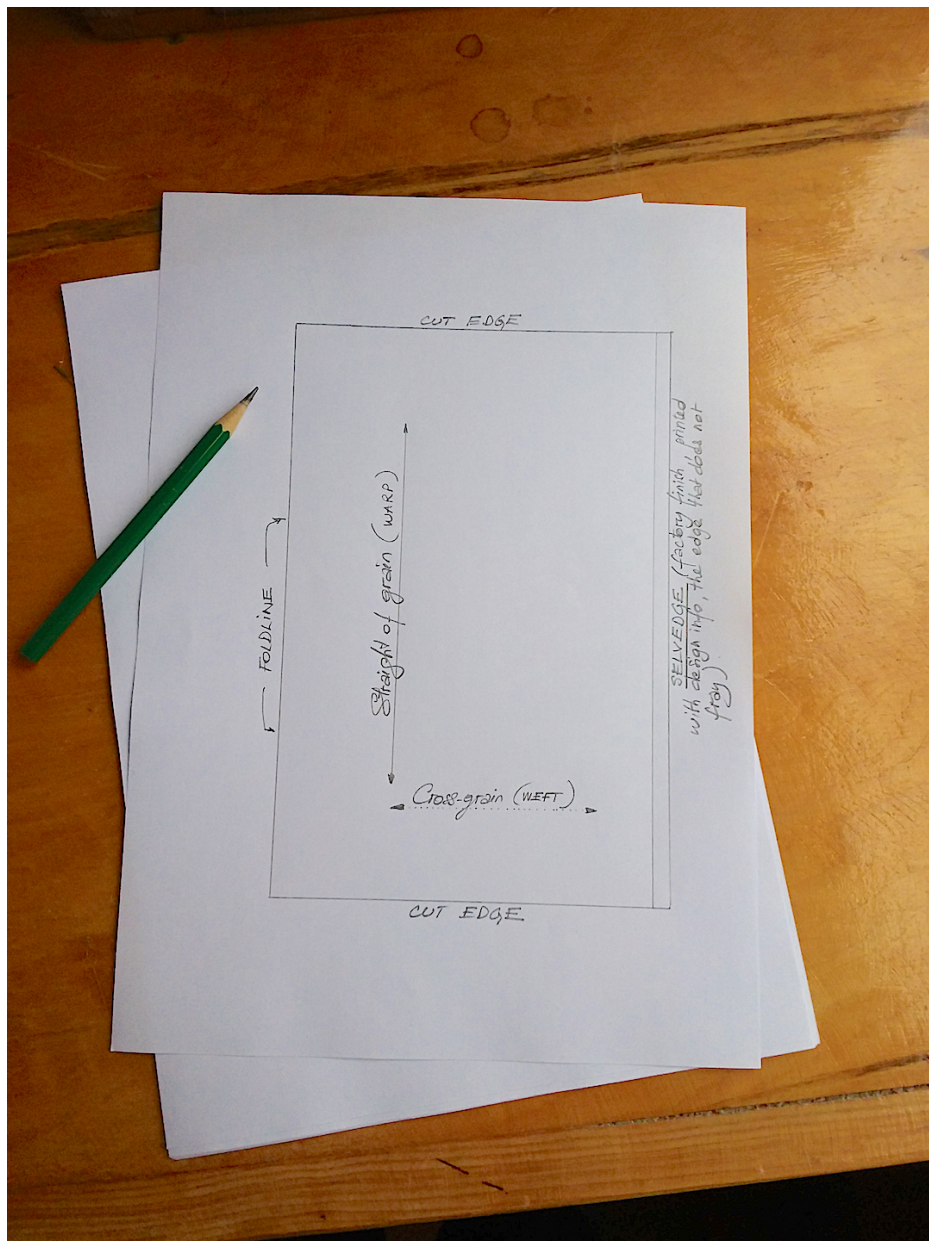
The selvage is the woven edge that does not fray (with factory finish, printed with design info...etc).

**Fold your fabric right sides together, lengthwise, aligning selvage on selvage.**

## **For 12 masks :**

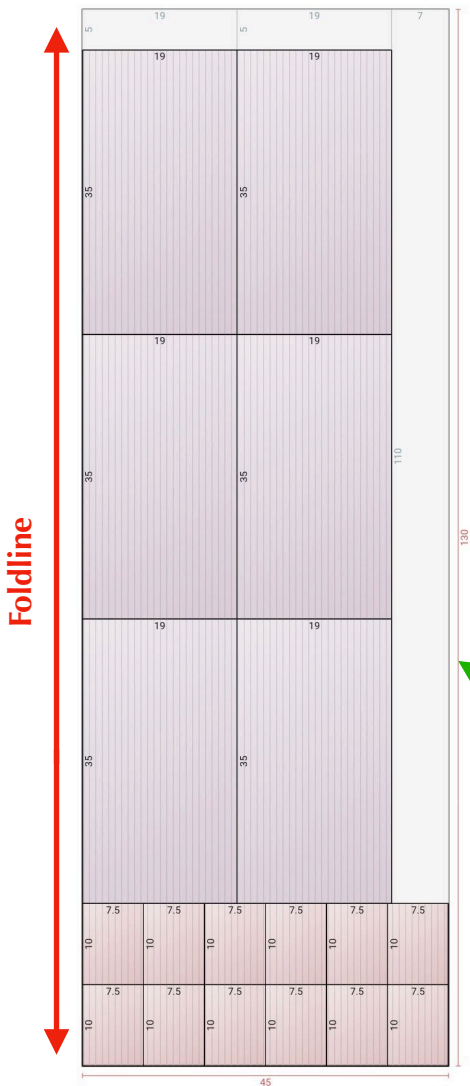
- if the width of your fabric is 90cm, you will need a length of 130cm
- for a width of 120cm, a length of 90cm
- for a width of 140 cm, a length of 80 cm
- for a width of 160 cm, a length of 70 cm

If you are recycling fabric, it will be more difficult to optimise the cutting but it is better if the **length of your masks follows the grain line** of your fabric (warp).

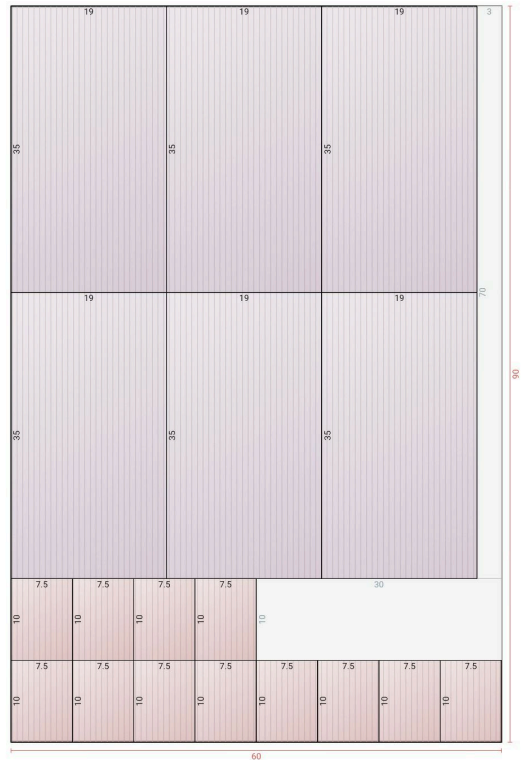


Each layout shows the fabric ALREADY folded in 1/2.

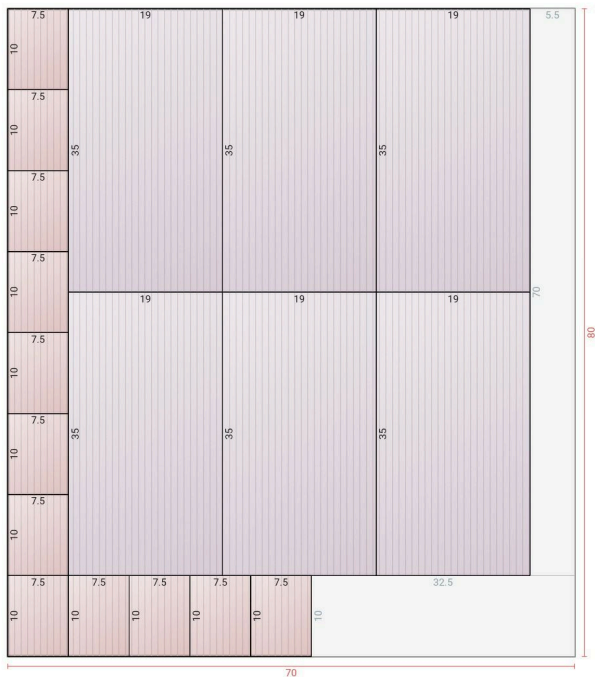
Full width 90cm



Full width 120cm



Full width 140cm



Full width 160cm

